

# MaxComm

## MaxComm Tap Coin WiFi

Model: A202



“Tap Coin WiFi” (WiFi Vending Machine) brings a brand-new vending business into public market. It provides visitors an immediate WiFi Internet hotspot service charged by time or traffic data.

Everyone has a smartphone, but not everywhere have WiFi. WiFi Vending Machine can fill this huge gap between WiFi needs and WiFi Coverage, and offer you a new way to gain revenue easily.

The machine is plug-&-play and easy to install. And the best part is all investment can be returned in 3 months.

### FUNCTIONS

- No inquiry, no username, and no password are required; just tap the phone, insert coins, and get WiFi.
- Provide big WiFi signal range (around 100 meters for outdoor / 30 meters for indoor) and support around 50 concurrent users (optional high-end version can support up to 500 concurrent users).
- No need for supervision. Self-service working method to save labor cost.
- Provide user-friendly pop-up instruction page to tell end users how to get WiFi service.
- Excellent coin-learning ability to recognize your local coins and discriminate fake coins.
- Offer cloud-based NMS (Network Management System) to monitor all online machines remotely.
- Support account roaming between different machines to help end users enjoy your WiFi service in multiple sites.
- Professional coin passage design to prevent coin stolen or fraud.

# MaxComm

## What do You Need to Prepare?

ONLY INTERNET & POWER



1. Connect Internet Cable  
or Insert 4G SIM Card



2. Plug in the Machine

## How to Get WiFi Service?

ONLY 3 STEPS



1. Tap Your Phone



2. Switch on WiFi &  
Connect Machine's SSID



3. Insert Coins

*Compatible with All WiFi-Enabled Device*



## Top-up via Voucher Code

(especially for users with laptop/PC or for long-term WiFi connection)



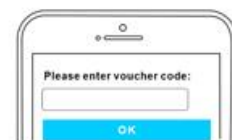
1. Get or Buy Voucher  
Code from Seller



2. Switch on WiFi &  
Connect Device's SSID



3. Click "Top-up" Button



4. Enter the Voucher  
Code & Click OK

# MaxComm

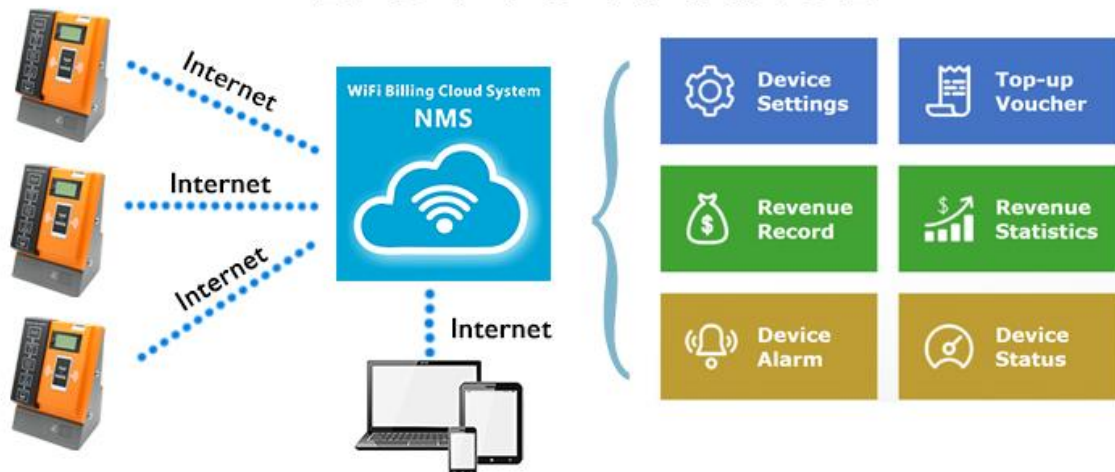
## FEATURES

30<sub>(indoor)</sub> / 100<sub>(outdoor)</sub> Meters Range  
50 Concurrent Users



- \* WiFi Signal Range will vary with actual installation environment.
- \* High-end version of machine can support up to 500 concurrent users.

## EASY TO MANAGE



# ***MaxComm***

---

## BENEFITS

- Venue owners can get extra revenue by providing WiFi hotspot service and attract more visitors which is good for his original business;
- Venue owners can display advertisements for their products on the login page for better promotion, or show ads for other shops to get income;
- No WiFi squatter or hacker to steal Internet because no username and password is required.
- Travelers can get quick and cheap Internet access without paying expensive charge for data roaming or new SIM card;
- Visitors can check/send email, browse websites, and watch videos from any WiFi-enabled smart mobile phone, tablet, laptop, or handheld device.

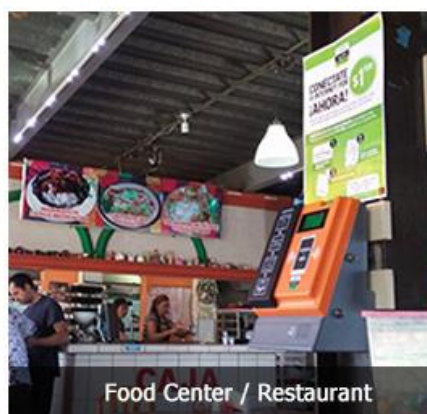
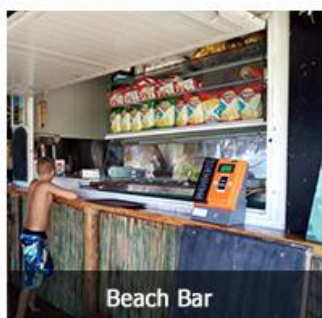


# MaxComm

## APPLICATION

Suited for indoor or storefront public environment, such as:

- Long-stay place: dormitories, apartments, hotels, hospitals;
- Crowded public place: stations, food centers, restaurants, coffee shops, pubs, lounge bars, Karaoke bars, beauty salons, chain shops, lobby of banks/hotels;
- Sports area and recreation centers: bowling, billiards;
- Tourism place: international airports, beaches, parks, swimming pools, exhibition and convention sites.



# MaxComm

## OPTIONAL ADD-ONS

### Banknote Acceptor



- Can accept most bills in the world
- Provided with metallic protective box (optional)
- With LED at front to indicate status
- Input Voltage: AC100-240V 50/60Hz
- Output Voltage: DC12V
- Power Consumption: 2.4 Watt
- Dimensions: 105mm (W) x 160mm (D) x 250mm (H)
- Weight: 1.1 kg

### Cellphone Charging Box





- Can get extra income by selling power charging service
- Input Voltage: AC100-240V 50/60Hz
- Output Voltage: DC5V
- Output Current: 2A
- Charging Cable: 4 x 1 meter
- Connector Type: IOS + Micro USB + Type C, 3 in 1
- Casing Material: ABS plastic
- Dimensions: 222mm (L) x 146mm (W) x 56 mm (H)
- Weight: 0.9 kg

# MaxComm

## How to Buy Charging Time?

3 Types of Connector Available

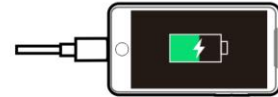
-  for Android (micro USB)
-  for Android (Type C)
-  for Apple



1. Connect Charging Cable



2. Insert Coins



3. Start Charging

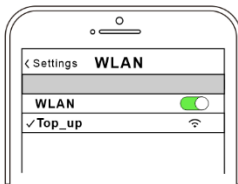
# MaxComm

## Mobile Airtime Top-up Function



- Can provide quick service for mobile balance recharge
- Need additional software development
- Need detailed information to login your local web-based airtime top-up platform

## How to Top-up Mobile Airtime?



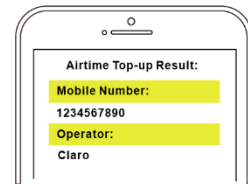
1. Connect SSID for Top-up



2. Enter Mobile Number & Choose Operator



3. Tap Your Phone & Insert Coins



4. Check Top-up Result

## Local Video Sharing Solution



- Add a new way to get revenue by sharing local videos based on time
- Can save Internet bandwidth and provide high-speed WiFi service
- Provided with a start-up USB disk and a hard disk for video storage, which shall be installed in your own computer
- Hard disk: 120GB SDD or 1TB HDD, SATA interface, 2.5 Inch

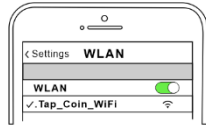


# MaxComm

## How to Buy Time to Watch Local Video?



1. Tap Your Phone



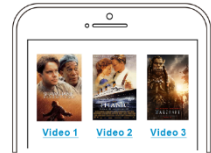
2. Switch on WiFi & Connect Machine's SSID



3. Insert Coins



4. Get the Link & Login Username/Password



5. Login & Choose the Video to Watch

# MaxComm

## Metallic Coin Box



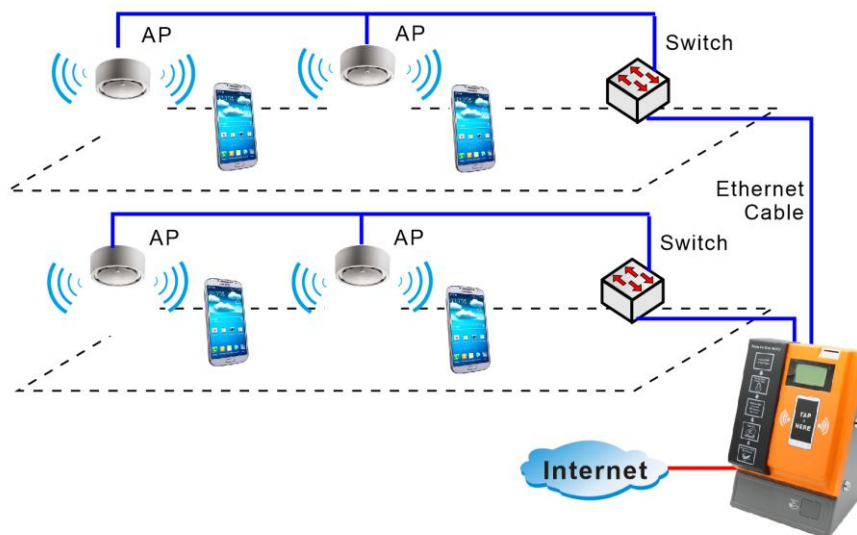
- Can give strong protection for coins against vandalism
- Casing Material: Power-Coated Steel Plate with thickness: 2mm (4mm at door)
- Bigger capacity: 2.7 liters
- Dimensions: 170mm (H) x 170mm (D) x 230mm (L)
- Weight: 3.6kg

## Access Point (WiFi Extender)



- Can extend the wifi signal range to attract more users
- Work in dual-band: 2.4 & 5 GHz
- Support PoE in
- Shall connect to machine via Ethernet cable
- Approximate extended range (\* it will vary with actual installation environment): around 100 meters (outdoor) / 30 meters (indoor)
- Dimensions: 188mm (H) x 113 mm (W) x 45mm (D)
- Weight: 0.3 kg

## How to Extend WiFi Coverage via AP?



# MaxComm

## TECHNICAL SPECIFICATIONS

Environmental Conditions	<ul style="list-style-type: none"><li>- Temperature: 5°C to 45°C (operation) / -10°C to 60°C (storage)</li><li>- Humidity: 10% ~ 85% non-condensing</li></ul>
Power Requirement	<ul style="list-style-type: none"><li>- External adaptor (input: 100-240 VAC, 50/60 Hz / output: 12-24VDC, 0.8A)</li><li>- Power consumption: 6 watts</li><li>- Support solar power supply</li></ul>
WiFi Operation Range	Radius up to 100 meters (outdoor) / 30 meters (indoor)
WiFi Frequency Range	BAND 2.412 to 2.484 GHz (and 5.150 to 5.875 GHz, optional)
Supported 4G Frequency Bands (optional)	LTE FDD: 700/800/850/900/1700/1800/1900/2100/2600MHz
Supported Max. 4G Data Speed (optional)	LTE FDD: Cat4 Download: 150Mbps / Upload: 50Mbps @20M BW
Supported Device for Tapping	Any WiFi-enabled mobile phone, tablet, laptop, PSP, PDA, etc.
Networking	<ul style="list-style-type: none"><li>- IEEE 802.11 b/g/n (and 802.11 a/ac, optional) Wireless LAN</li><li>- Zero end-user configurations</li></ul>
Authentication	Built-in user authentication and accounting
Remote Management via NMS (optional)	<ul style="list-style-type: none"><li>- Setting of WiFi name, WiFi service price, data speed limit</li><li>- Revenue records of WiFi Internet service</li><li>- Offer voucher codes for long-term wifi service</li><li>- Supervision on running status of each machine</li></ul>
About Coins	<ul style="list-style-type: none"><li>- Coin Acceptance: 15 different types</li><li>- Usable Coins: Diameter: 16mm ~ 31mm, Thickness: 1.2mm ~ 3.2mm</li><li>- Coin Box Capacity: 1 liter (optional metallic coin box: 2.7 liters)</li></ul>
Supported Language	English, Spanish, Portuguese, Russian, and Thai are available (other languages can be customized)
Structural	<ul style="list-style-type: none"><li>- Housing Material: ABS plastic</li><li>- WAN Interface: 1x RJ45 port or built-in 4G USB modem (optional)</li><li>- Antennas: 1x WiFi (built-in) or 1x 4G (optional built-in USB modem)</li><li>- LCD: 4-line, 128X64 pixels, backlight supported, shock resistance <math>\geq 4,000N</math></li><li>- Dimensions: 350mm (H) X 270mm (W) X 200mm (D)</li><li>- Weight: 3.1 kg</li><li>- Packing Dimensions: 430mm (H) X 320mm (W) x 240mm (D)</li><li>- Packing Weight: 3.8 kg</li></ul>